



GAT MONTHLY MEMBERSHIP PROGRESS REPORT

Results as of: 6/30/2022

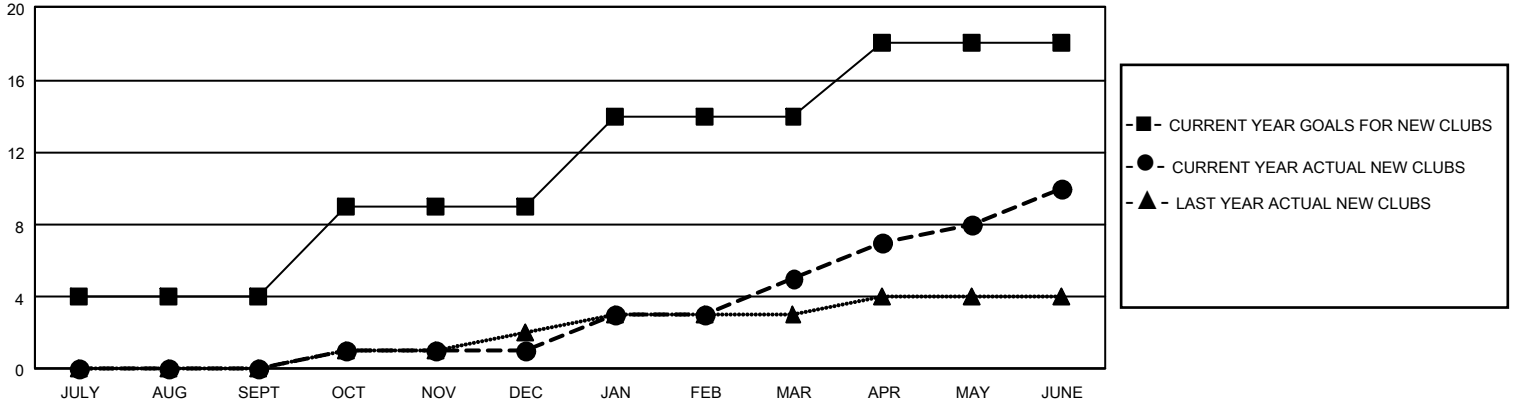
GMT Constitutional Area 5 - J, Group H

REPORT DOES NOT INCLUDE CLUBS IN UNDISTRICTED AREAS.

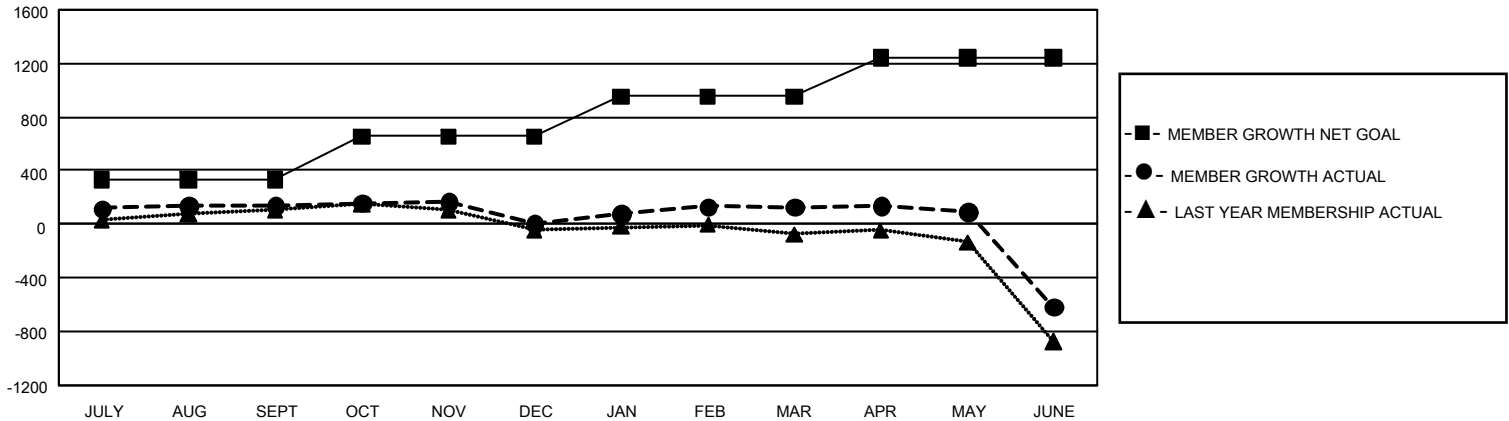
Clubs			
RESULTS FOR 2021-2022			
QUARTER	NEW CLUB GOAL	NEW CLUBS	DROPPED CLUBS
JULY/AUG/SEPT	12	0	0
OCT/NOV/DEC	15	1	4
JAN/FEB/MAR	15	4	2
APR/MAY/JUNE	12	5	11

Members			
RESULTS FOR 2021-2022			
QUARTER	MEMBER GROWTH NET GOAL	MEMBER GROWTH ACTUAL	DROPPED MEMBERS ACTUAL (including transfers)
JULY/AUG/SEPT	334	434	273
OCT/NOV/DEC	320	269	396
JAN/FEB/MAR	300	423	287
APR/MAY/JUNE	285	446	1,167

GOALS AND ACTUAL NEW CLUBS CUMULATIVE



GOALS AND ACTUAL MEMBERS CUMULATIVE



DROPPED CLUBS: 17	413 CLUBS OF 696 ADDED 1 OR MORE NEW MEMBERS	GENDER DISTRIBUTION	
		MALE 17,223 (74.71%) FEMALE 5,831 (25.29%) NON BINARY 0 (0.00%) PREFER NOT TO ANSWER 0 (0.00%)	
DROPPED MEMBERS		CLICK HERE FOR CUMULATIVE MEMBERSHIP DATA	TOTAL FAMILY UNIT MEMBERS 8,991
DECEASED 181 CLUB CANCELLED 13 OTHER 1,929 TOTAL 2,123	FAMILY MEMBERS PAYING HALF DUES 4,979		